

Psychology (B.A.) Neuropsychology Track

This document has been created for advising purposes only. Please contact the department for major and/or graduation requirements.

Prepared August 2010



What is Neuropsychology?

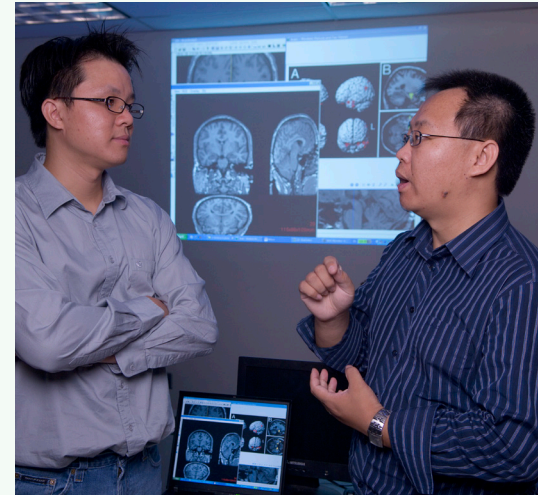
Neuropsychology is the scientific discipline that brings together the fields of neurology and psychology. Neuropsychologists study the brain-behavior relationship and the clinical application of that knowledge to human medical problems, such as head trauma or Alzheimer's dementia.

A neuropsychologist may have a range of responsibilities, including conducting research, conducting clinical interviews and assessments, and providing rehabilitation services to patients with serious medical and neurological problems.

A Ph.D. Clinical Neuropsychologist may be employed by a public, private or university hospital, a rehabilitation facility, or a private practice.

For those with a PhD in a non-clinical neuropsychology area, such as cognitive neuroscience or behavioral neuroscience, their career is usually research related because they cannot perform clinical assessments or provide clinical treatment services. Some behavioral neuroscientists conduct research with animals rather than humans.

One may earn a master's degree in clinical neuropsychology. Master's-level neuropsychologists may find opportunities



assisting in a research lab, testing patients, coordinating data, completing data analysis, and publishing. It is important to recognize that graduate programs in neuropsychology are competitive.

The purpose of the neuropsychology track in psychology is to provide students with a comprehensive understanding of psychology while providing students who want to focus on the interplay between neurology and psychology with the requisite coursework to pursue advanced training in neuropsychology.

Potential Career Paths

- Clinical Neuropsychologist (MA, PhD)
- School Neuropsychologist (PhD)
- Professional Research Scientist (PhD)
- Clinical Psychologist (PhD)
- Biomedical Researcher (PhD)
- Cognitive/Behavioral Neuroscientist (PhD)

Contact Information:

Department of Psychology
200 Porter Hall
Athens, OH 45701
740-593-1707

psychology@ohiou.edu
www.psych.ohiou.edu/

Assistant Chair for
Undergraduate
Studies in Psychology:
Susan Tice-Alicke, PhD
261 Porter Hall
Athens, OH
740-597-2718
tices@ohiou.edu



Additional Resources

To learn about the neuropsychology profession, here is what you can do.

1 Visit websites of professional organizations, such as Division 40 (Neuropsychology) or Division 6 (Behavioral Neuroscience and Comparative Psychology) of the American Psychological Association (APA), www.apa.org. For those specifically interested in clinical neuropsychology, see www.div40.org

2 Volunteer in hospitals or other mental health settings.

3 Schedule a meeting with a neuropsychologist to discuss their profession.

If you are interested in pursuing a career in neuropsychology be sure to work with an advisor to develop an academic plan that is tailored to your interests. Your plan should lead to the completion of coursework that is desired for admission to a graduate program in neuropsychology.

University and College Requirements

In addition to the requirements for the neuropsychology track, which are listed below, be sure to complete all other university and college requirements, including the foreign language requirement.

If you are planning to start college-level foreign language with a course beyond 111, you are advised to begin foreign language in your first year. If you are starting foreign language with 111, begin language courses no later than the junior year.

Required Courses in Psychology

PSY 101 General Psychology (5)

PSY 221 Statistics for Behavioral Sci (5)

PSY 226 Research Methods (4)

PSY 321 Advanced Statistics (5)

PSY 412 Clinical Neuropsychology (4)

Biological—at least one of the following:

PSY 201 Sensation and Perception (4)

PSY 203 Learning (4)

PSY 312 Physiological Psychology (4)

PSY 314 Comparative Psychology (5)

PSY 327 Human Psychophysiology (4)

PSY 380 Psych of Health and Illness (4)

Cognitive—at least one of the following:

PSY 304 Human Learning and Cog Processes (4)

PSY 305 Human Memory

PSY 307 Psycholinguistics

PSY 308 Human Judgment and Dec Making

Developmental—at least two of the following:

PSY 273 Child and Adolescent Psych (4)

PSY 315 Behavior Genetics (5)

PSY 374 Adulthood and Aging (4)

PSY 376 Psych Disorders of Childhood (4)

PSY 378 Psychology of Gender (4)

PSY 470 Prenatal Influences on Development (4)

Clinical—at least two of the following:

PSY 233 Psychology of Personality (4)

PSY 332 Abnormal Psychology (4)

PSY 341 Tests and Measurements (4)

PSY 351 Intro to Clinical and Counseling (4)

PSY 430 Psychoactive Drugs (4)

Social/Organizational—at least two of the following:

PSY 261 Industrial and Organizational (4)

PSY 310 Motivation (4)

PSY 336 Social Psychology (4)

PSY 337 Social Psychology of Justice (4)

PSY 361 Adv Organizational Psychology (4)

PSY 362 Personnel Psychology (4)

Note: Courses in **bold** are required for the neuropsychology track and courses in *italics* are recommended.

Extra-Curricular Requirements— Sciences & Mathematics

One of the two following sequences is required:

BIOS 103 Human Biology I (5)

BIOS 203, 204 Human Biology II (5)

BIOS 413A, B Human Neuroscience (4)

or

BIOS 170, 171 Introduction to Zoology (10)

BIOS 301A, B Human Anatomy (5)

BIOS 345, 346 Human Physiology (7)

BIOS 413A, B Human Neuroscience

One of the two following sequences is recommended:

CHEM 121, 122, 123 Prin of Chemistry (12)

CHEM 151, 152, 153 Fund of Chemistry (15)

The following is recommended:

PHYS 201 Intro to Physics (5)

At least two of the following are required:

MATH 113 Algebra (5)

MATH 147 Game Theory (4)

MATH 150 Finite Mathematics (4)

MATH 163A, B Intro to Calculus (7)

MATH 263A, B Calculus (8)

Fieldwork and Research in Psychology

PSY 489 (1-5, 5 max)—Credit for volunteer work in a mental health or health care setting.

PSY 390 (1-5, 15 max)—Credit for participating in research under the supervision of a faculty member.

Extra-Curricular Requirements— Social Sciences & Humanities

PHIL 130 or 331 Introduction to Ethics (4) or
Moral Prob in Medicine (4)

Additional Recommended Courses

BIOS 206 Drugs and the Brain (4)

BIOS 333 Neural Basis of Behavior (3)

HLTH 230 Medical Terminology (3)